

Business Analytics with R

Installation Guide for Windows

edureka!

edureka!

Installation Guide for Windows

Table of Contents

1. R installation steps for Windows.....	2
2. R, RStudio and R commander installation steps for Windows.....	9
3. Deducer installation steps for Windows.....	11
4. Rattle installation steps for Windows.....	13

edureka!

R Installation Steps for Windows

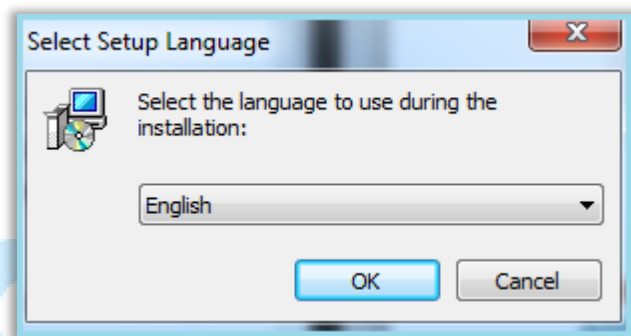
R 3.0.1 for Windows: <http://cran.r-project.org/bin/windows/base/>

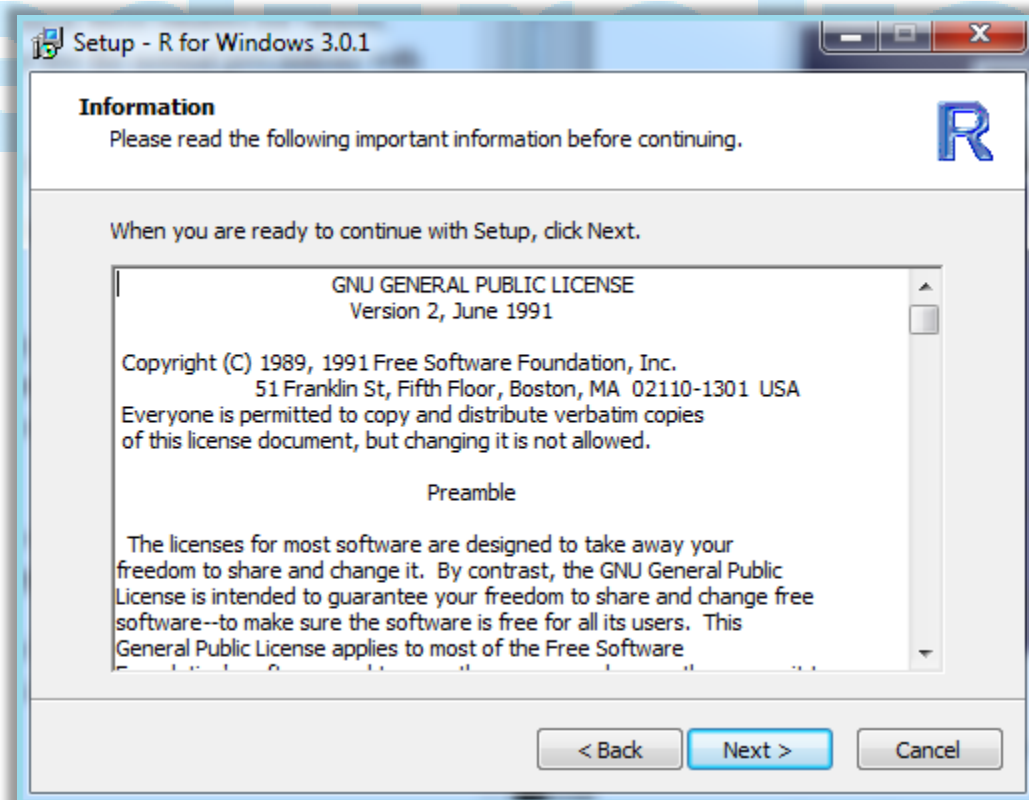
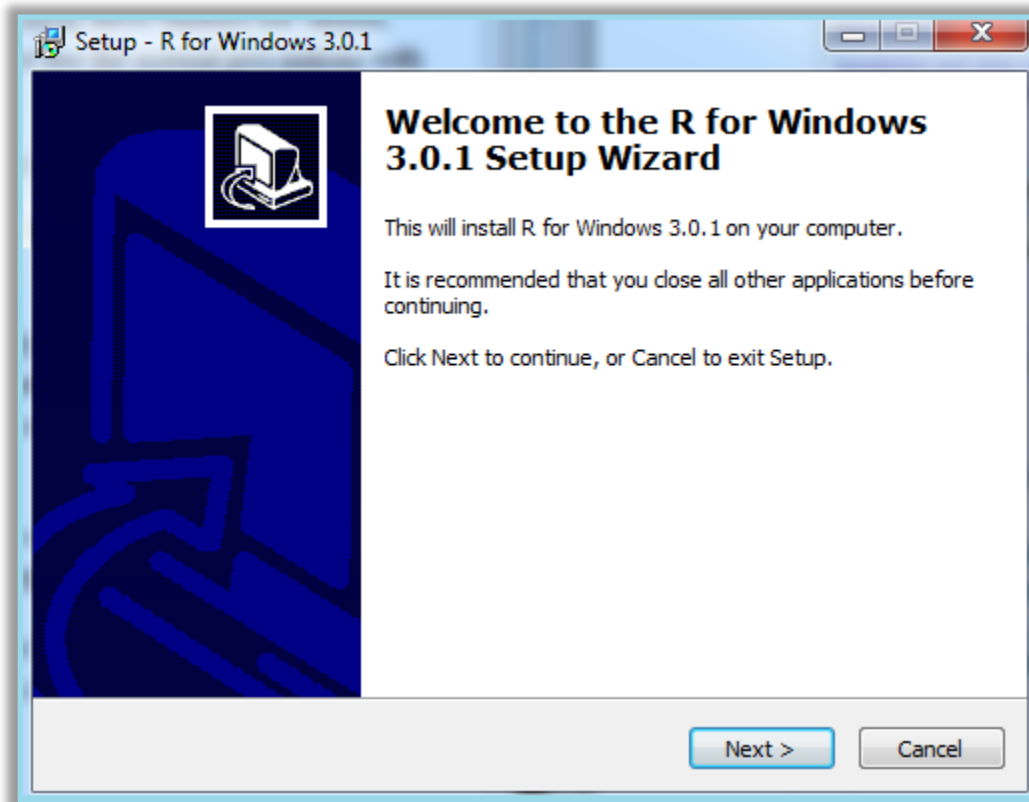
Step 1:

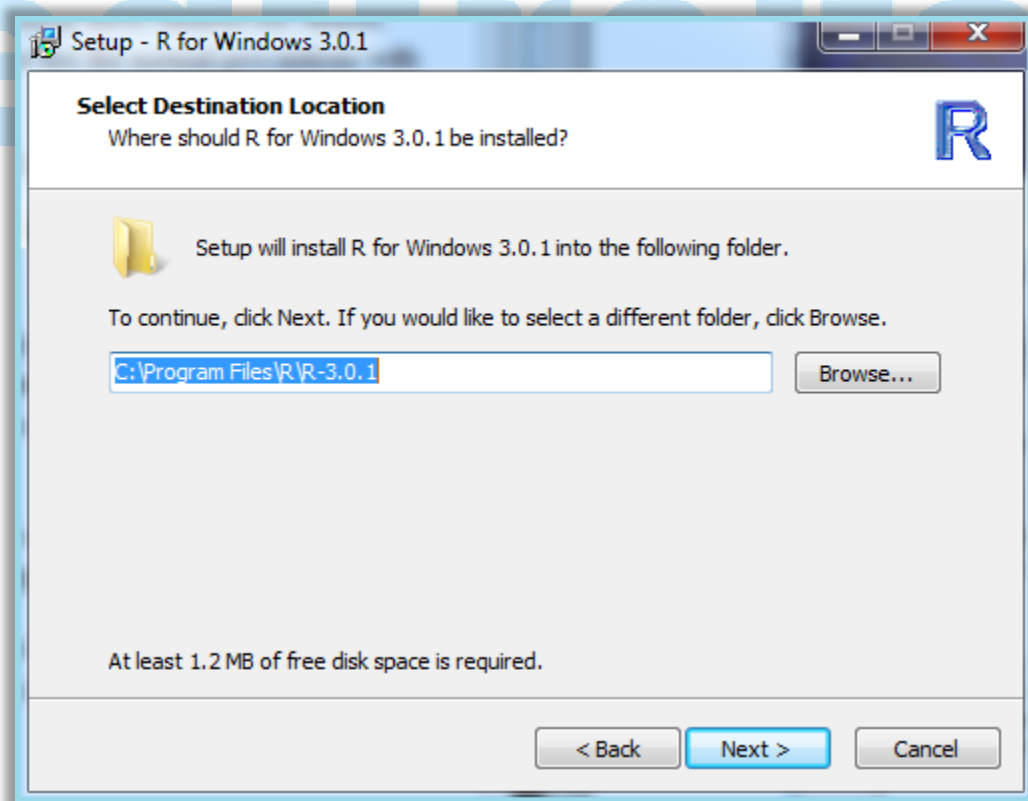
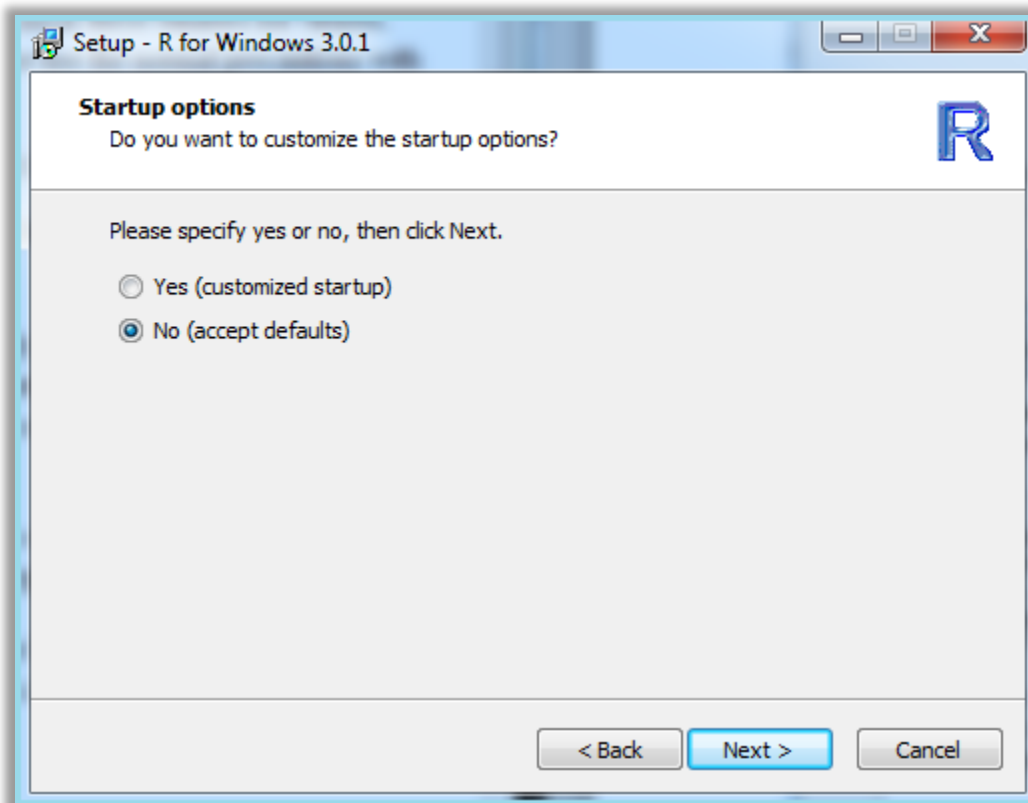
Download the “R 3.0.1 for Windows” from the link shown above and Install it.

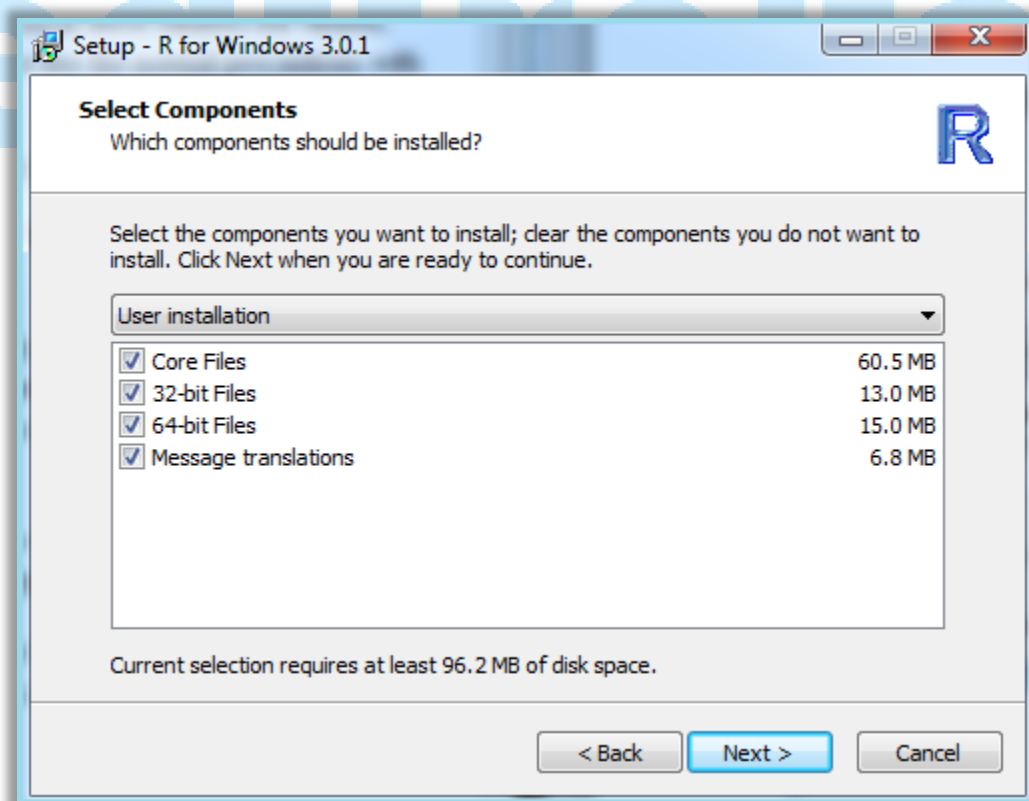
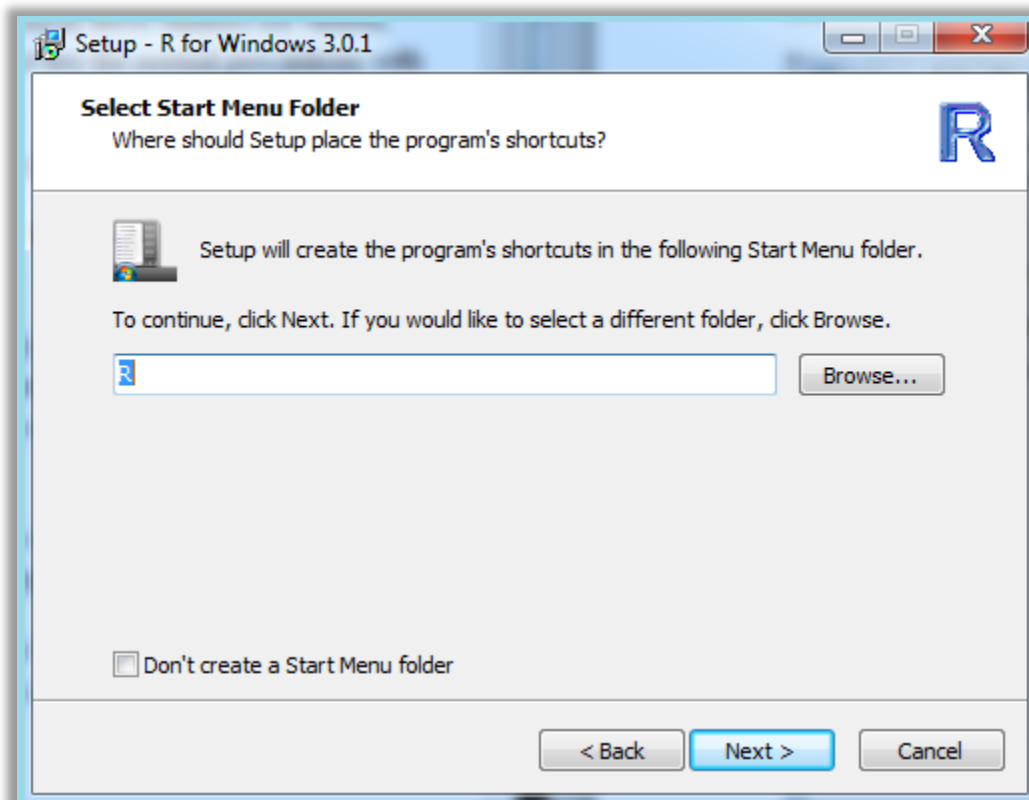
Step 2:

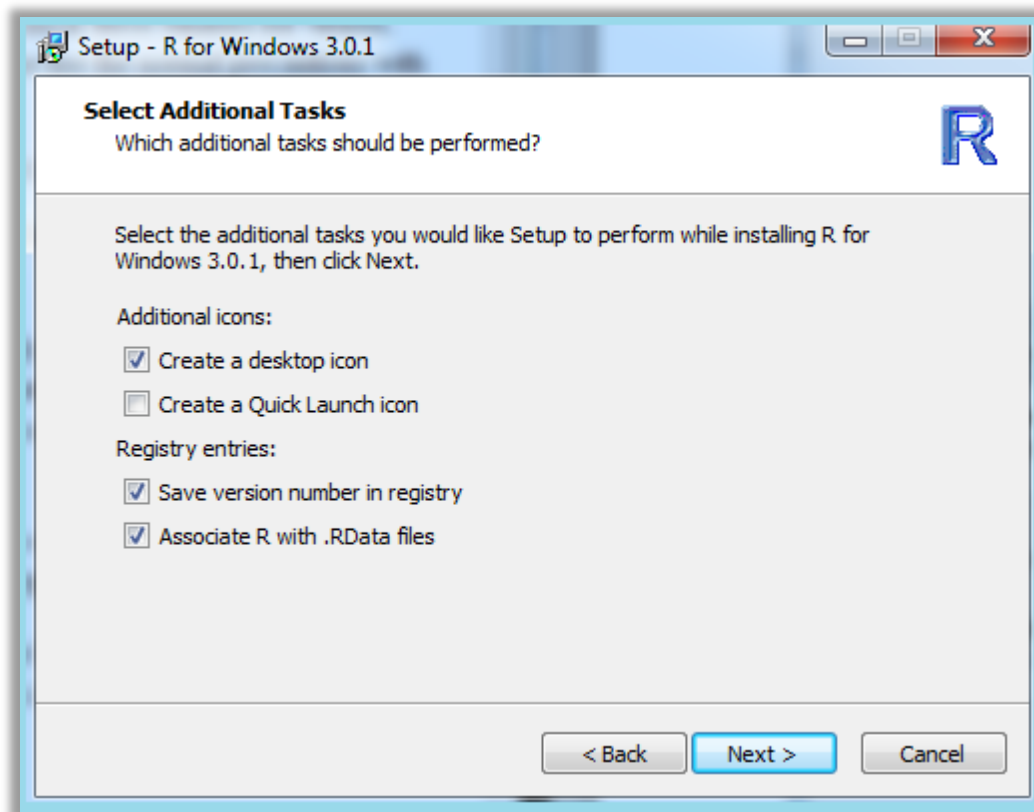
Double Click the short-cut and open the R terminal



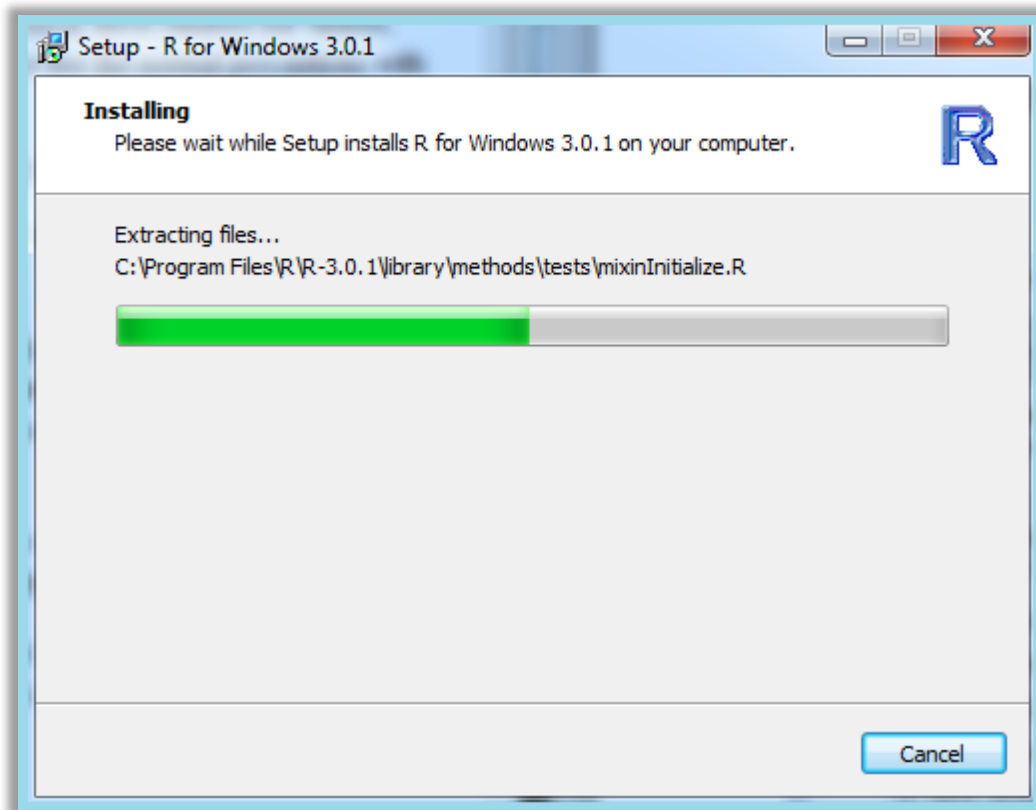








edureka!



Step 2:

Double Click the short-cut and open the R terminal



R, RStudio, and R Commander Installation Steps for Windows

Step 1:

Download R from <http://cran.us.r-project.org/> (click on “Download R for Windows” > “base” > “Download R 2.x.x for Windows”)

Step 2:

Install R. Leave all default settings in the installation options.

Step 3:

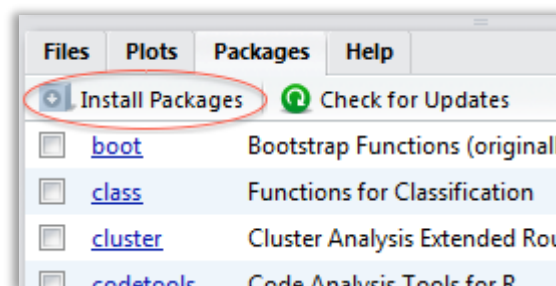
Download RStudio from <http://rstudio.org/download/desktop> and install it. Leave all default settings in the installation options.

Step 4:

Open RStudio

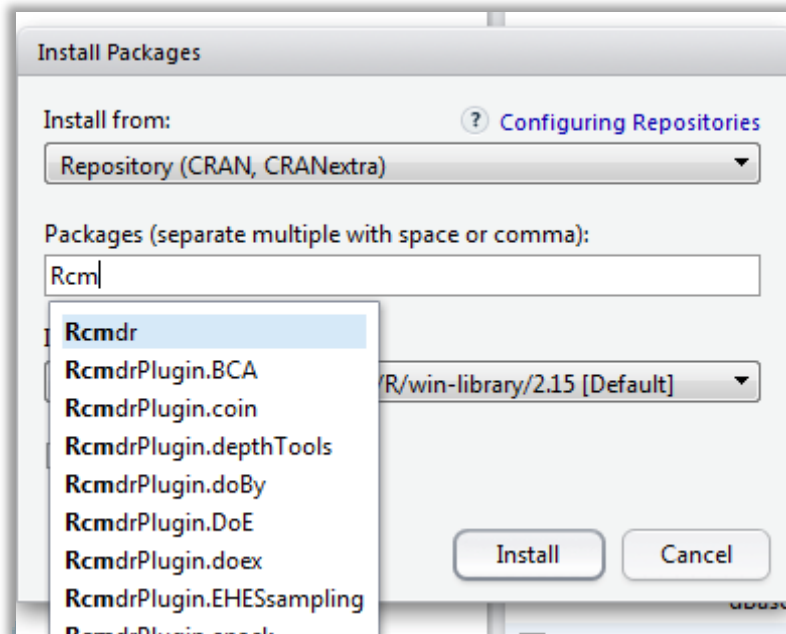
Step 5:

Go to the “Packages” tab and click on “Install Packages”. The first time you’ll do this you’ll be prompted to choose a CRAN mirror. R will download all necessary files from the server you select here. Choose the location closest to you (probably “USA CA 1” or “USA CA 2”, which are housed at UC Berkeley and UCLA, respectively).



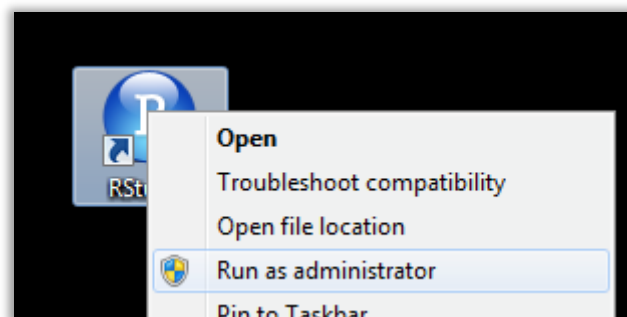
Step 6:

Start typing “Rcmdr” until you see it appear in a list. Select the first option (or finish typing Rcmdr), ensure that “Install dependencies” is checked, and click “Install”.

**Step 7:**

Wait while all the parts of the R Commander package are installed.

Step 8: If you get permission errors while installing packages, close R Studio and reopen it with administrator privileges.



Deducer Installation Steps for Windows

Step 1:

Download and install Java JRE 1.6 from https://cds.sun.com/is-bin/INTERSHOP.enfinity/WFS/CDS-CDS_Developer-Site/en_US/-/USD/ViewProductDetail-Start?ProductRef=jre-6u24-oth-JPR@CDS-CDS_Developer

Step 2:

Download and install R, JGR and Deducer from <http://www.deducer.org>

Step 3:

Select All-In-One Installer for R, JGR and Deducer (latest release)

Step 4:

Start R

Step 5:

Download and install the spatial and text analysis by running the following commands

```
install.packages(c("rgdal","sp", "maptools", "tm"))
install.packages("Deducer",, "http://www.rforge.net", type="source")
install.packages("DeducerSpatial", repos="http://R-Forge.R-project.org", type="source")
install.packages("DeducerText",
repos="http://www.cs.ucla.edu/~alexalex/R", type="source")
```

Step 6:

Start JGR and within JGR window

Step 7:

Run the Spatial and Text Module to add the Spatial and Text menu to the Deducer.

```
library(DeducerSpatial)
library(DeducerText)
```

Step 8:

Note: if you can't see the modules that we just installed, copy all packages from C:/Users/Your_user_name/Documents/R/win-library/2.13 to C:/Program Files/R/R-2.13.0/library" by

```
xcopy C:\Users\Your_user_name\Documents\R\win-library\2.13\* C:\Program Files\R\R-2.13.0\library /S /H /F /Y
```

Rattle Installation Steps for Windows

Step 1:

Install R from [CRAN](#)

Step 2:

Start-up R and then

```
> install.packages("rattle")
```

```
> library("rattle")
```

```
> rattle()
```

Dev Release

The latest development version is available directly from Togaware:

```
> install.packages("rattle", repos="http://rattle.togaware.com")
```

It can be downloaded from [togaware.com](#).

Details:

1. Instal

Step 3:

Download and run the self-installing executable to install R (version 3.0.1 is 52MB) from [CRAN](#), the Comprehensive R Archive Network, as [R-2.15.1-win.exe](#) [130910]. Choosing all the defaults on the install works just fine.

Both a 32 bit and a 64 bit version will be installed - they coexist.

2. Install Rattle

Step 4:

Open the R Desktop icon (32 bit or 64 bit) and enter the following command at the R prompt. R will ask for a CRAN mirror. Choose a nearby location.

```
> install.packages("rattle")
```

Step 5:

Enter the following two commands at the R prompt. This loads the Rattle package into the library and then starts up Rattle.

```
> library(rattle)
```

```
> rattle()
```

If the RGtk2 package has yet to be installed, there will be an error popup indicating that libatk-1.0-0.dll is missing from your computer. Click on the OK and then you will be asked if you would like to install GTK+. Click OK to do so. This then downloads and installs the appropriate GTK+ libraries for your computer. After this has finished, do exit from R and restart it so that it can find the newly installed libraries.

When running Rattle a number of other packages will be downloaded and installed as needed, with Rattle asking for the user's permission before doing so.

The installation has been tested [120706] to work on Microsoft Windows, 32bit and 64bit, XP, Vista and 7 with R 2.15.1, Rattle 2.6.19 and RGtk2 2.20.17.

3. Optional Configuration and Installations

Step 6:

You may like to install RStudio (version 0.96.331 is 32.1MB), an integrated development environment for interacting with R, from www.rstudio.org as [RStudio-0.96.331.exe](#)[120926].

Step 7:

Increasing in sophistication is Emacs Speaks S (version 24.2m2 is 52MB), an integrated development environment for R, available from vgoulet.act.ulaval.ca as [emacs-24.2-modified-2.exe](#) [120926].

Step 8:

Rattle will install other packages as needed but we can force the install of all other packages Rattle uses in one go if we so wish, using:

```
> install.packages("rattle", dep=c("Suggests"))
```

Step 9:

To use the Microsoft Windows theme engine, and thus have Rattle look like all other Windows applications (in terms of colour and style), create a file with the name `gtkrc` to contain the following line. Make sure the file name does not have any filename extension (i.e., no `.txt` or anything else with a dot). The file needs to be located in the GTK+ installation

folder. This might be, for example, C:/Users/username/R/win-library/2.15/RGtk2/gtk/i386/etc/gtk-2.0/.gtk-theme-name = "MS-Windows"

NOTE: You can also download R from <http://cran.rstudio.com/> and RStudio from <http://www.rstudio.com/products/rstudio/download/>. Installation of these Packages is not mandatory.

edureka!